

AI-assisted central kitchen system for F1 Circuit

Mr. Lavesh R. Vishwakarma¹, Ar. Palash Agrawal²

¹Mr. Lavesh R. Vishwakarma

Student, P. R. Pote College of Architecture, Amravati, Maharashtra, India

²Ar. Palash Agrawal

Project Guide, P. R. Pote College of Architecture, Amravati

Abstract - Formula 1 paddocks operate under extreme time pressure, requiring high levels of efficiency, coordination, and consistency across all support systems, including food preparation. While significant innovation has been applied to racing technologies, kitchen operations within paddock infrastructure remain largely conventional and manually driven.

This paper proposes an **AI-assisted central kitchen system** designed to enhance the performance of food preparation in Formula 1 environments. The system allows kitchen staff to input parameters such as cuisine type, recipe, spice level, number of people, and user category (drivers, engineers, VIPs, or staff). Based on these inputs, the AI system calculates ingredient quantities, checks available inventory, and generates step-by-step cooking guidance.

Integrated voice commands and digital display interfaces enable hands-free interaction, improving workflow efficiency in fast-paced kitchen conditions. Additionally, the system incorporates a learning mechanism that records preparation data and continuously refines future recommendations, ensuring improved accuracy and consistency over time.

Rather than replacing human decision-making, the proposed system functions as an intelligent assistant, supporting chefs in planning, organizing, and executing tasks more efficiently. By combining digital intelligence with spatial kitchen design, the project demonstrates how auxiliary infrastructure in Formula 1 can be transformed into a high-performance system aligned with the speed, precision, and adaptability of the sport.

Key Words: Artificial Intelligence (AI), Formula 1, Central Kitchen System, Smart Kitchen, Paddock Infrastructure, Workflow Optimization, Inventory Management, Voice-Assisted Interface, Food Preparation Automation, Human-AI Collaboration, Kitchen Efficiency, Digital Kitchen Environment.

1. INTRODUCTION

Formula 1 is a sport built on speed, precision, and highly efficient systems. Every aspect of a race weekend is carefully planned and optimized, from the performance of the cars to the coordination of pit operations. However, support spaces like paddock kitchens, which are essential for serving drivers, engineers, staff, and guests, are still largely based on conventional working methods.

During a race weekend, these kitchens have to handle large volumes of food within limited time while maintaining quality and hygiene. In most cases, the process depends heavily on manual planning, estimation, and repeated physical effort. This can lead to delays, inconsistencies, and unnecessary pressure on staff, which does not align with the high-performance nature of F1.

With the growing use of digital technology in various fields, there is an opportunity to rethink how kitchen environments function. Instead of being purely manual workspaces, they can be supported by intelligent systems that assist in planning and execution. The idea is not to replace human skills, but to enhance them through better organization and decision-making tools.

This project explores the design of an AI-assisted central kitchen system for Formula 1 paddock infrastructure. The system allows kitchen staff to input details such as the type of cuisine, recipe, number of people, and user category. Based on this, it helps in calculating ingredient quantities, checking available inventory, and guiding the cooking process step by step. Over time, the system can also learn from past data to improve efficiency and consistency.

The aim of this approach is to create a practical and adaptable kitchen system that supports faster, more organized operations while maintaining the quality expected in a Formula 1 environment.

1.1 Problem Statement

During a Formula 1 race weekend, paddock kitchens operate under intense pressure. They are required to prepare and serve food quickly for a wide range of users, including drivers, engineers, team staff, and VIP guests. Each group has different needs in terms of nutrition, quantity, and quality, which makes kitchen operations more complex than a typical food service setup. At present, most kitchen processes rely heavily on manual planning and decision-making. Chefs and staff are required to estimate ingredient quantities, manage available inventory, and organize cooking workflows based on experience and judgment. While this approach can work, it often leads to inefficiencies, especially in a high-speed environment like Formula 1 where time and precision are critical. One of the key challenges is the lack of a structured system to support decision-making. Staff may spend unnecessary time checking ingredients, adjusting recipes based on availability, or coordinating tasks during peak

hours. This can result in delays, inconsistent food quality, and increased workload. In addition, maintaining proper inventory control and minimizing food waste becomes difficult without a reliable monitoring system.

Unlike other areas of Formula 1, where advanced technologies are used to optimize performance, paddock kitchens have not been fully explored as high-performance systems. There is a clear gap between the level of innovation seen in core race operations and the relatively traditional approach used in kitchen environments. This highlights the need for a more organized and intelligent system that can assist kitchen staff in planning, managing, and executing tasks efficiently. By introducing an AI-assisted approach, it is possible to reduce manual effort, improve consistency, and create a more responsive kitchen environment that aligns with the overall performance standards of Formula 1.



Fig -1: Traditional vs AI kitchen workflow

1.2 Aim and Objectives

The aim of this project is to design an AI-assisted central kitchen system for Formula 1 paddock infrastructure that improves efficiency, consistency, and workflow management in food preparation while supporting human decision-making.

Objectives

The objectives of the project are:

- To develop a system that allows users to input parameters such as cuisine type, recipe, quantity, and user category for structured food preparation



Fig -2: Kitchen operation challenges

- To integrate inventory awareness for better management of ingredients and reduction of food waste
- To assist kitchen staff with step-by-step cooking guidance and optimized workflow planning
- To incorporate voice and display interfaces for hands-free and efficient interaction in a fast-paced environment
- To create a system that can learn from previous data and improve performance over time
- To explore the architectural integration of such a system within a central kitchen layout

2. CONCEPT OVERVIEW

The project proposes an **AI-assisted central kitchen system** designed specifically for Formula 1 paddock operations. The concept focuses on transforming the kitchen from a purely manual workspace into an **intelligent, assisted environment**

that supports faster and more organized food preparation. The system is based on a simple idea: instead of relying entirely on manual planning, kitchen staff can input key requirements such as cuisine type, recipe, spice level,

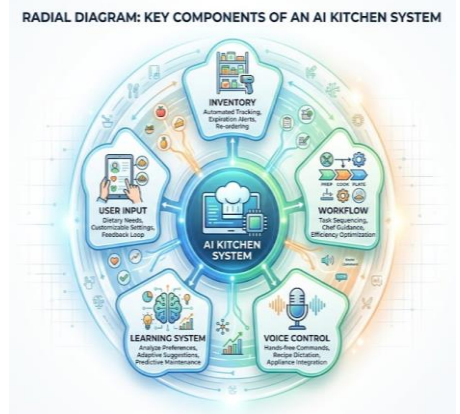


Fig -3: AI kitchen system components

number of people, and user category. These inputs act as the starting point for the system. Once the information is provided, the AI processes it along with available inventory data and generates a structured output. This includes accurate ingredient quantities, preparation steps, and an optimized sequence of cooking tasks. The system is designed to guide rather than control, allowing chefs to maintain flexibility while reducing time spent on calculations and decision-making. To improve usability in a fast-paced kitchen environment, the concept integrates **voice commands and digital display interfaces**. These allow staff to interact with the system hands-free and follow real-time instructions without interrupting their workflow.

An important aspect of the concept is its **adaptive learning capability**. Over time, the system records data from previous operations, such as preparation time, frequently used recipes, and workflow patterns. This information is used to improve future recommendations, making the kitchen more efficient with each use. Overall, the concept aims to create a **practical and scalable system** that enhances efficiency, consistency, and coordination within the central kitchen, aligning it with the high-performance nature of Formula 1 operations.

3. METHODOLOGY

The proposed AI-assisted kitchen system is not only a technological intervention but also a spatial design strategy that influences how the central kitchen is planned and organized. The layout is developed to support efficient workflow, clear zoning, and seamless interaction between users and the system. The kitchen is organized into

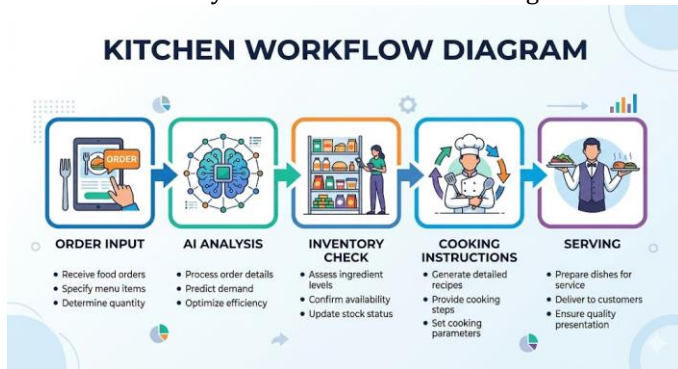


Fig -4: Kitchen workflow diagram

distinct functional zones, each connected through a logical sequence of movement. At the entry point, a **digital input and control station** is provided where kitchen staff can enter requirements such as recipe, quantity, and user type. This space acts as the starting point of the workflow and connects the digital system with the physical environment. Adjacent to this is the **storage and inventory zone**, where ingredients are arranged systematically for easy access. This area is designed to work in coordination with the AI system, allowing quick identification and retrieval of materials. The layout minimizes unnecessary movement by placing frequently used items closer to the preparation areas. The **preparation zone** is designed as an interactive workspace with integrated display panels. These

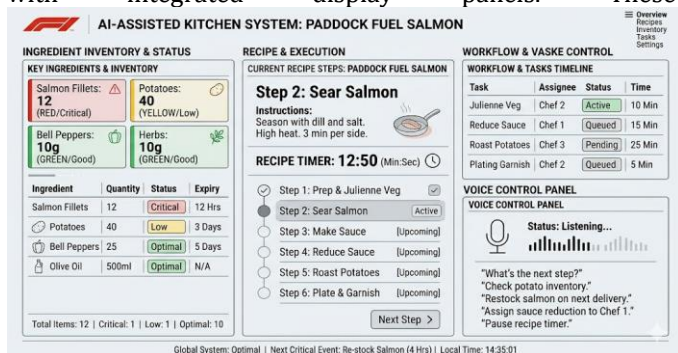


Fig -5: AI kitchen dashboard

screens provide step-by-step guidance, ingredient details, and timing instructions, allowing staff to follow the workflow without disruption. The design ensures adequate workspace, clear circulation, and visual connectivity with other zones. The **cooking zone** is organized to support parallel activities, enabling multiple tasks to be carried out efficiently. Display interfaces and voice-assisted controls are integrated into this area to maintain continuity of the guided workflow. The arrangement of equipment is planned to reduce congestion

and improve safety. Finally, the **plating and dispatch zone** is positioned near the exit for smooth distribution of food to different paddock areas. This ensures a clear transition from preparation to service, reducing delays during peak hours. Overall, the spatial design focuses on reducing movement, improving visibility, and integrating digital interfaces within the physical environment. The result is a **well-coordinated kitchen layout** that supports both human efficiency and AI-assisted operations, aligning with the high-performance demands of F1.

4. DESIGN APPLICATION

The proposed AI-assisted kitchen system is not only a technological intervention but also a spatial design strategy that influences how the central kitchen is planned and organized. The layout is developed to support efficient workflow, clear zoning, and seamless interaction between users and the system. The kitchen is organized into distinct functional zones, each connected through a logical sequence of movement. At the entry point, a **digital input and control station** is provided where kitchen staff can enter requirements such as recipe, quantity, and user type. This space acts as the starting point of the workflow and connects the digital system with the physical environment. Adjacent to this is the **storage and inventory zone**, where ingredients are arranged systematically for easy access. This area is designed to work in coordination with the AI system, allowing quick identification and retrieval of materials. The layout minimizes unnecessary movement by placing frequently used items closer to the preparation areas. The **preparation zone** is designed as an interactive workspace with integrated display panels. These screens provide step-by-step guidance, ingredient details, and timing instructions, allowing staff to follow the workflow without disruption. The design ensures adequate workspace, clear circulation, and visual connectivity with other zones. The **cooking zone** is organized to support parallel activities, enabling multiple tasks to be carried out efficiently. Display interfaces and voice-assisted controls are integrated into this area to maintain continuity of the guided workflow. The arrangement of equipment is planned to reduce congestion and improve safety. Finally, the **plating and dispatch zone** is positioned near the exit for smooth distribution of food to different paddock areas. This ensures a clear transition from preparation to service, reducing delays during peak hours. Overall, the spatial design focuses on reducing movement, improving visibility, and integrating digital interfaces within the physical environment. The result is a **well-coordinated kitchen layout** that supports both human efficiency and AI-assisted operations, aligning with the high-performance demands of Formula 1.

5. ADVANTAGES AND IMPACT

The proposed AI-assisted central kitchen system offers several practical advantages that improve the overall

efficiency and performance of paddock operations. One of the primary benefits is **improved efficiency in food preparation**. By providing accurate ingredient quantities and step-by-step guidance, the system reduces the time spent on planning and decision-making, allowing kitchen staff to focus more on execution. The system also ensures **consistency in food quality**, as recipes and processes are standardized through guided instructions. This is especially important in Formula 1 environments where the same level of quality is expected across different race locations. Another key advantage is **better inventory management**. By tracking available ingredients and suggesting alternatives when required, the system helps reduce food waste and avoids last-minute shortages. The integration of **voice commands and display interfaces** improves ease of use in fast-paced kitchen conditions, enabling hands-free interaction and minimizing workflow interruptions. Additionally, the learning capability of the system allows it to **improve over time**, making future operations more efficient based on past data and usage patterns. Overall, the system enhances coordination, reduces workload, and creates a more organized kitchen environment that aligns with the high-performance nature of Formula 1.

6. CONCLUSION

Formula 1 represents one of the most advanced and performance-driven environments in the world, where every system is designed to maximize efficiency and precision. However, supporting infrastructures such as paddock kitchens have not been explored to the same level of innovation. This project presents an AI-assisted central kitchen system that rethinks food preparation as an organized and intelligent process rather than a purely manual activity. By combining user inputs, inventory awareness, guided workflows, and adaptive learning, the system supports kitchen staff in performing tasks more efficiently while maintaining control and flexibility. The integration of this system within the spatial design of the kitchen further strengthens its practicality, ensuring that technology and architecture work together seamlessly. In conclusion, the project demonstrates how even auxiliary spaces within Formula 1 can be transformed into high-performance environments. By improving efficiency, consistency, and coordination, the proposed system aligns kitchen operations with the speed, precision, and innovation that define Formula 1.



Fig -6: Smart kitchen environment

REFERENCES

- [1] Formula 1. (2019). *F1 Sustainability Strategy – Net Zero by 2030*. Formula One Group. <https://www.formula1.com/en/latest/article/formula-1-announces-plan-to-be-net-zero-carbon-by-2030.51aX2AZHyy7jqxl6wra6CZ>
- [2] FIA. (2024). *Formula One Sporting and Technical Regulations*. Fédération Internationale de l'Automobile. <https://www.fia.com/regulation/category/110>
- [3] Russell, S., & Norvig, P. (2021). *Artificial Intelligence: A Modern Approach* (4th ed.). Pearson. <https://www.pearson.com/en-us/subject-catalog/p/artificial-intelligence-a-modern-approach/P200000003500/9780134610993>
- [4] Cook, D. J., & Das, S. K. (2005). *Smart Environments: Technology, Protocols and Applications*. Wiley-Interscience. <https://onlinelibrary.wiley.com/doi/book/10.1002/047168659X>
- [5] Hoy, M. B. (2018). "Alexa, Siri, Cortana, and More: An Introduction to Voice Assistants." *Medical Reference Services Quarterly*, 37(1), 81–88. <https://www.tandfonline.com/doi/full/10.1080/02763869.2018.1404391>
- [6] Panero, J., & Zelnik, M. (1979). *Human Dimension & Interior Space*. Whitney Library of Design. <https://www.wiley.com/en-in/Human+Dimension+and+Interior+Space-p-9780823072712>